

# DX Air Cooled Series

DX Nanosecond Lasers

## DPSS, TEM<sub>00</sub>, Q-Switched Lasers

With over 26 years' experience and tens of thousands delivery since 1998, our diode pumped DX Air-Cooled Series nanosecond DPSS lasers deliver unmatched performance in a compact, air-cooled design. Engineered to lead the market, these lasers provide up to 10 W UV and 20 W green power, while the ultra-compact models offer 1 W UV and 2 W green. With their small footprint and efficient air-cooling system, the DX Air-Cooled Series seamlessly integrates into industrial micro processing systems, offering the perfect balance of power, precision, and adaptability for even the most demanding applications.

This legacy of proven reliability and innovation makes the DX Series ideal for critical applications such as micron-precision marking, solar cell processing, and more. If you're looking for a laser solution that combines cutting-edge performance with a compact, dependable design, the DX Air-Cooled Series is your go-to choice.



### APPLICATIONS

- Marking & Scribing
- Silicon, PERC and Solar Cell
- PCB & Polymer Cutting & Drilling
- Selective Annealing and Doping
- Copper & Gold Sintering
- Gold & ITO Scribing
- Resistor Trimming
- LIDAR & Laser Ranging

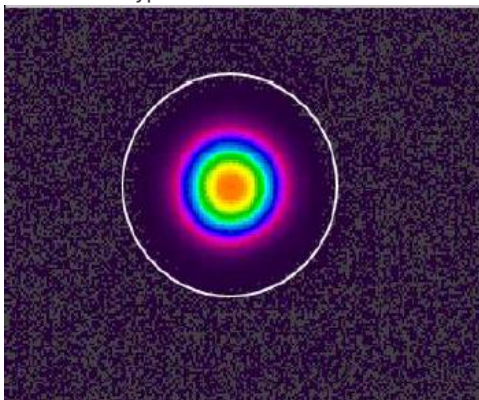
### FEATURES

- Up to ~400uJ Pulse Energy at 50 kHz
- True TEM<sub>00</sub> Output
- Short Pulse Widths
- Air-cooled with Base Plate Cooled Option
- Robust & Compact Form Factor
- Dynamic **Pulse Energy Control - PEC**
- **Position Synchronized Output - PSO**
- Power Monitoring and Self-Calibration

Specifications – DX-AC Series				
	DX-532-2	DX-532-10	DX-532-15	DX-532-20
Wavelength	532nm			
Average Power	2W @ 50kHz	10W @ 50kHz	15W @ 50kHz	20W @ 70kHz
Pulse Energy @ 50kHz	~40uJ	~200uJ	~300uJ	~400uJ
Pulse Width @ 50kHz	~10-15ns			
Pulse repetition rate <sup>1</sup>	Single shot to 300 kHz			
Pulse-to-pulse stability <sup>2</sup>	<2% rms			
Long-term power stability <sup>3</sup>	<2% rms			
Beam spatial mode & M <sup>2</sup>	TEM <sub>00</sub> - M <sup>2</sup> <1.1			
Beam divergence (nominal)	~ 2.5 mrad			~4 mrad
Beam diameter at exit (nominal)	~ 0.5mm			
Beam roundness	~90%			
Beam pointing stability	<20 urad			
Polarization ratio	Vertical; >100:1			
<b>Operational Specifications and Characteristics</b>				
Interface	RS232, Ethernet, Software GUI, External TTL Triggering			
Warm-up time	< 5 minutes from standby, <10 minutes from cold start			
Electrical requirement	100-240 V AC - 15 V DC, 13.4 A [ PSU Included]			
Line frequency	50-60 Hz			
Power consumption	~50W	~130W		
Dimensions	9 x 5 x 3.38 in	11x5x5 in - [279.4x127x127 mm]		
Weight	~10 lbs [~4.5 kg]	~15.5 lbs [~7 kg]		
<b>Environmental Requirements</b>				
Ambient temperature <sup>4</sup>	Ambient 15°C to 30°C (59°F to 86°F) Operating Range			
	Relative humidity 0% to 80% max, non-condensing			
Storage conditions	-10°C to 40°C; sea level to 12000 m			
	0% to 80% relative Humidity, non-condensing			
Cooling system	Air-Cooled / Base Plate Cooled <sup>5</sup>			

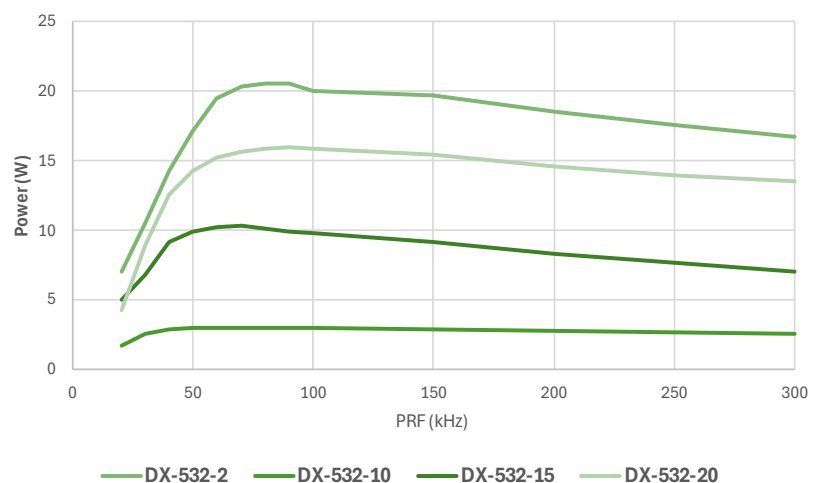
[1.] Lower pulse repetition rates (down to < 30 kHz) performance achieved by pulse energy capping. [2.] Measured at ambient temperature ± 2°C. [3.] Measured over 8 hours ± 1°C. [4.] For operation of the laser outside of the specified temperature range, contact us. [5.] For water-cooled heatsink option, contact us.

Typical Beam Profile



DX-532-10

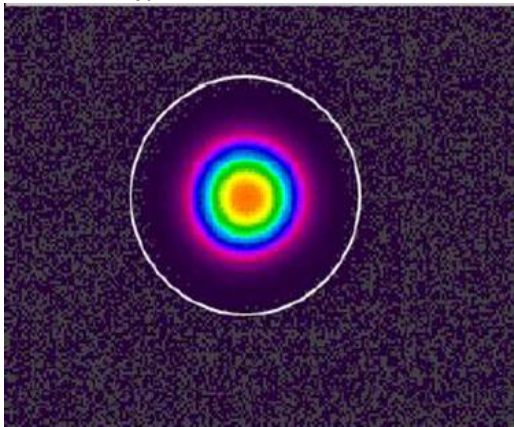
Power Vs. PRF



Specifications – DX-AC Series				
	DX-355-1	DX-355-5	DX-355-8	DX-355-10
Wavelength	355nm			
Average Power @ 50kHz	1W	5W	8W	10W
Pulse Energy @ 50kHz	~20uJ	~100uJ	~160uJ	~200uJ
Pulse Width @ 50kHz	~10-15ns			
Pulse repetition rate <sup>1</sup>	Single shot to 200 kHz			
Pulse-to-pulse stability <sup>2</sup>	<2% rms			
Long-term power stability <sup>3</sup>	<2% rms			
Beam spatial mode & M <sup>2</sup>	TEM <sub>00</sub> - M <sup>2</sup> <1.1			
Beam divergence (nominal)	~ 2.5 mrad			
Beam diameter at exit (nominal)	~ 0.3mm	~ 0.4mm		
Beam roundness	~90%			
Beam pointing stability	<25 urad			
Polarization ratio	Vertical; >100:1			
<b>Operational Specifications and Characteristics</b>				
Interface	RS232, Ethernet, Software GUI, External TTL Triggering			
Warm-up time	< 5 minutes from standby, <10 minutes from cold start			
Electrical requirement	100-240 V AC - 15 V DC, 13.4 A [ PSU Included]			
Line frequency	50-60 Hz			
Power consumption	~50W	~130W		
Dimensions	9 x 5 x 3.38 in	11x5x5 in - [279.4x127x127 mm]		
Weight	~10 lbs [~4.5 kg]	~15.5 lbs [~7 kg]		
<b>Environmental Requirements</b>				
Ambient temperature <sup>4</sup>	Ambient 15°C to 30°C (59°F to 86°F) Operating Range			
	Relative humidity 0% to 80% max, non-condensing			
Storage conditions	-10°C to 40°C; sea level to 12000 m			
	0% to 80% relative Humidity, non-condensing			
Cooling system	Air-Cooled / Base Plate Cooled <sup>3</sup>			

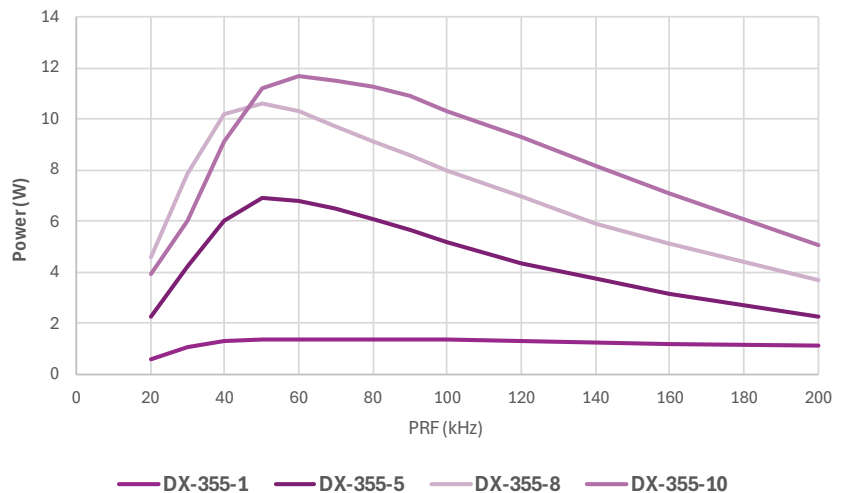
[1.] Lower pulse repetition rates (down to < 30 kHz) performance achieved by pulse energy capping. [2.] Measured at ambient temperature ± 2°C. [3.] Measured over 8 hours ± 1°C. [4.] For operation of the laser outside of the specified temperature range, contact us. [5.] For water-cooled heatsink option, contact us.

Typical Beam Profile



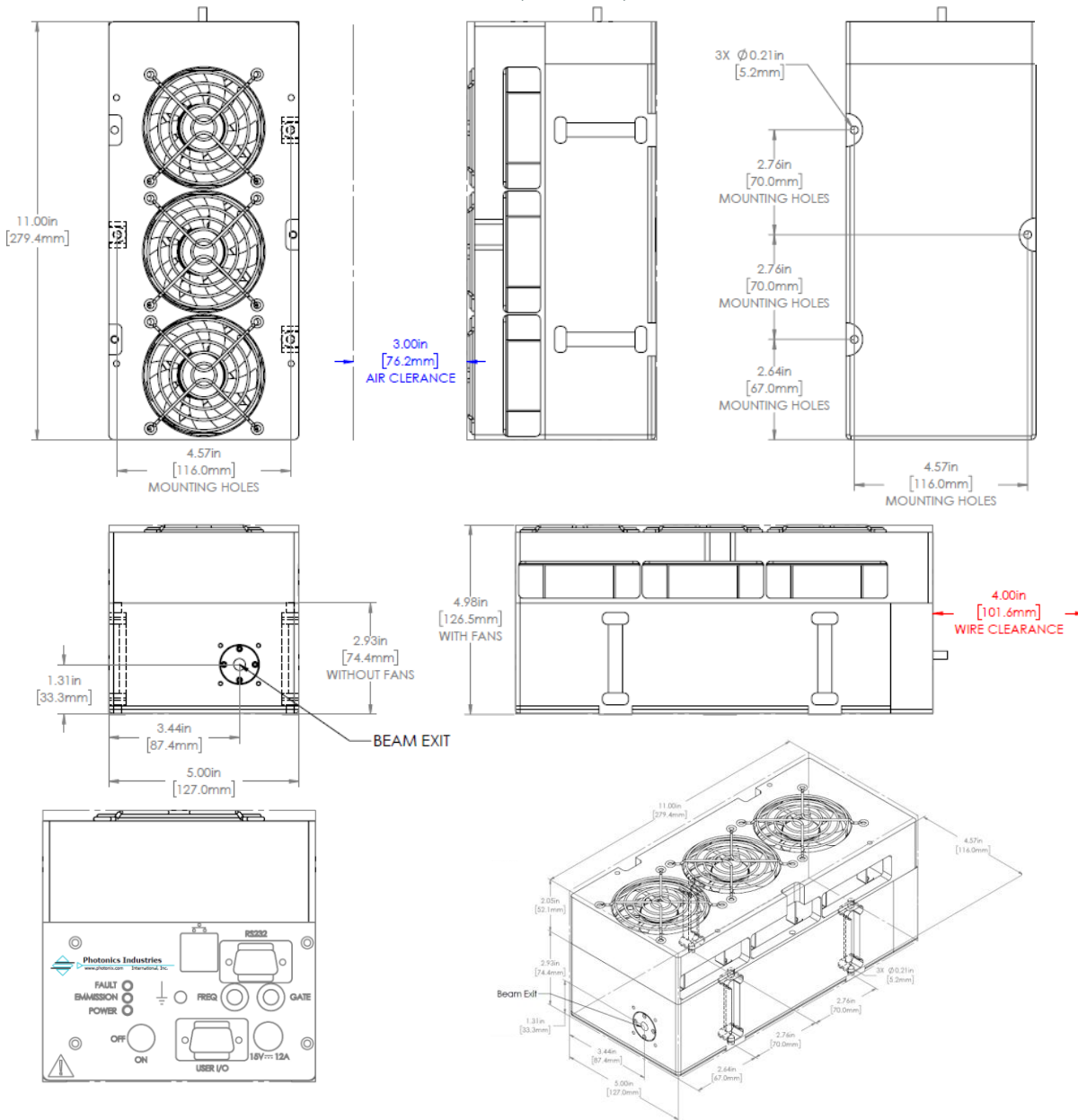
DX-355-5

Power Vs. PRF



**Dimensional Drawings**

**DX-532-10, DX-532-15, DX-532-20,  
DX-355-5, DX-355-8, DX-355-10**



**Options:**

Deep Ultraviolet (DUV)	266nm Wavelength available upon request (Dimensions may vary)	{DX-266}
Rad-cooling™	Rad-cooling™ system instead of air-cooling fans	[RC]
Format	DX-532/355	- [Power level] - [xxx]



Our ongoing policy is to improve the design and specification of our products. The information provided is non-binding.

© 2024 Photonics Industries International, Inc.

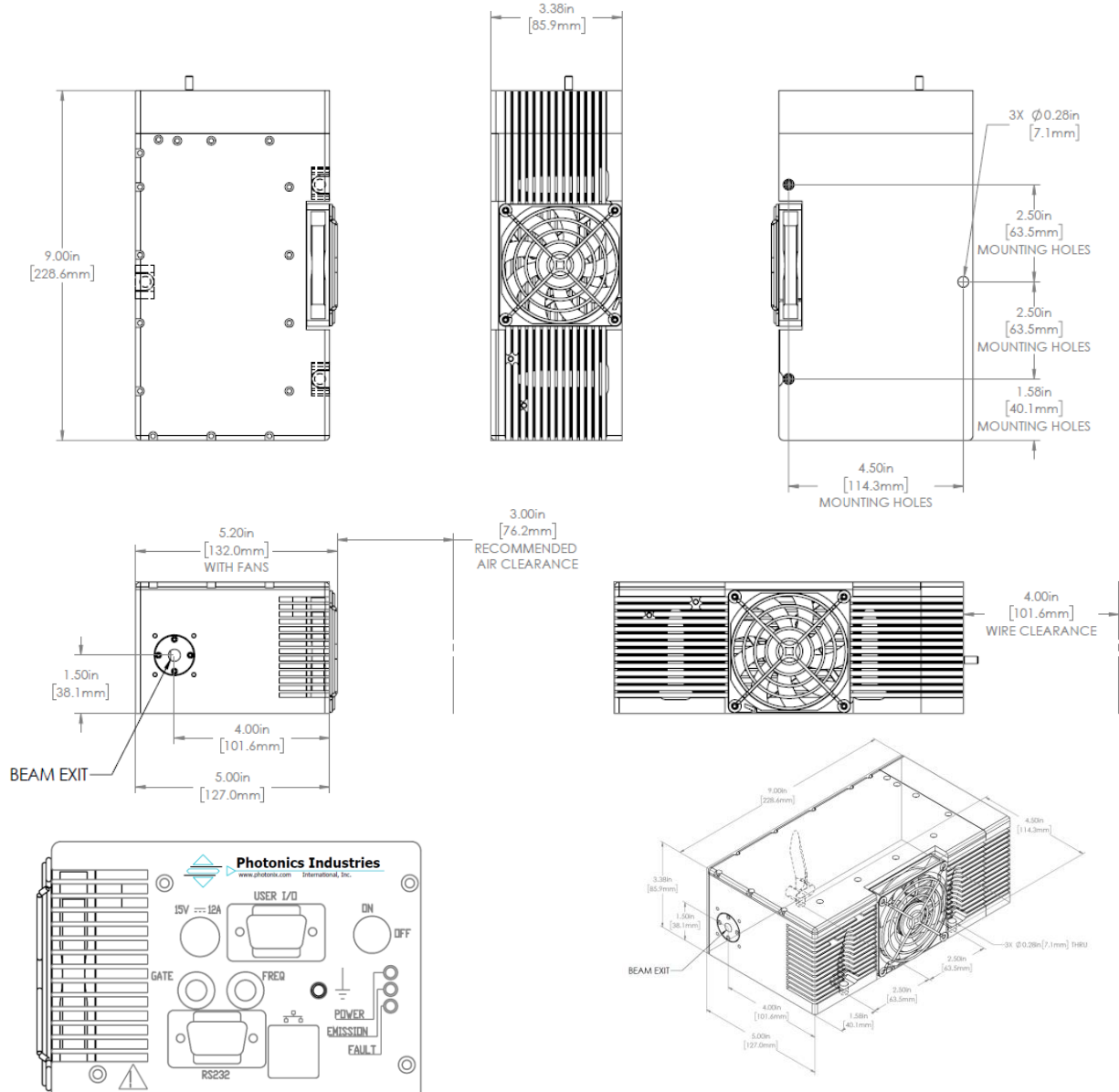
Headquarters: 1800 Ocean Ave, Ronkonkoma, New York 11779, United States

Photonics Industries International Inc. is the pioneer of intracavity harmonic lasers and is at the forefront of developing, manufacturing, and marketing a wide range of nanosecond, sub-nanosecond, picosecond, and femtosecond lasers for the industrial, scientific, defense and medical industries.



**Dimensional Drawings**

**DX-532-2,  
DX-355-1**



**Options:**

Deep Ultraviolet (DUV)	266nm Wavelength available upon request	{DX-266}
Rad-cooling™	Rad-cooling™ system instead of air-cooling fans	[RC]
Format	DX-532/355	- [Power level] - [xxx]



Our ongoing policy is to improve the design and specification of our products. The information provided is non-binding.

© 2024 Photronics Industries International, Inc.

Headquarters: 1800 Ocean Ave, Ronkonkoma, New York 11779, United States

Photronics Industries International Inc. is the pioneer of intracavity harmonic lasers and is at the forefront of developing, manufacturing, and marketing a wide range of nanosecond, sub-nanosecond, picosecond, and femtosecond lasers for the industrial, scientific, defense and medical industries.

For more information [www.photonix.com](http://www.photonix.com)





光と人をつなぐ

# Rayture Systems



レイチャーシステムズ株式会社

〒160-0006 東京都新宿区舟町7 ロクサンビル7F

TEL : 03-3351-0717 FAX : 03-3351-6771

URL : <http://www.rayture-sys.co.jp>

E-mail : [laser@rayture-sys.co.jp](mailto:laser@rayture-sys.co.jp)